

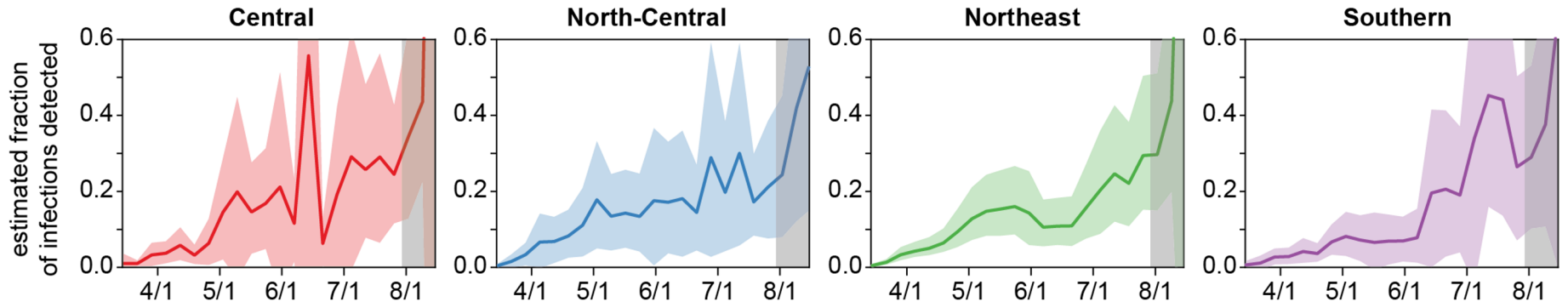
- **The epidemic is likely growing across the state.** We estimate R_{eff} was at or above 1 as of:
 - August 12 in COVID region 11 and
 - August 7-9 in COVID regions 1-2 and 4-10.

These are the latest dates for which we can provide estimates due to reporting delays and region-specific sample size. After these dates, we observe other signs consistent with a growing epidemic, but these should be interpreted with caution as they are lagged indicators of epidemic growth. Test positivity continues to rise despite increased testing in COVID regions 2, 4, 5, and 7.

- **Sentinel outpatient surveillance would provide the clearest and earliest signal of changes in transmission rates (R_{eff}), especially when transmission is focused in younger age groups.** Daily reports of confirmed COVID-19 hospital admissions with dates of symptom onset could also be used to calculate R_{eff} but would lag estimates from cases at sentinel outpatient surveillance sites.

Northwestern University

- R_t is still ≥ 1 in nearly all parts of the state, indicating that transmission is not yet decreasing.
- Regions 4 and 5 continue to show worrying trends.
- Region 2 trends have improved.
- The fraction of all SARS-CoV-2 infections that are being detected has increased, especially in the Southern Region, although we are still detecting the minority of infections.



ILLINOIS

Second wave continuing, but below hospital capacity for now

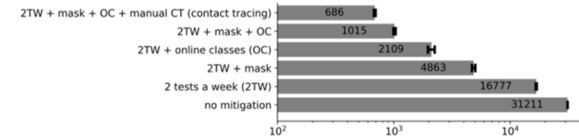
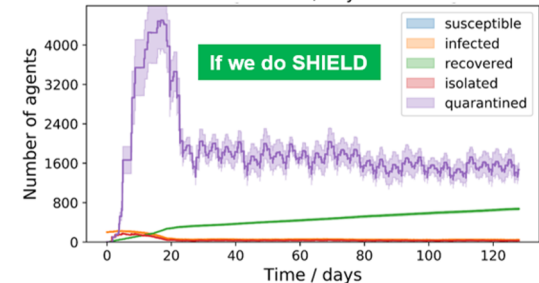
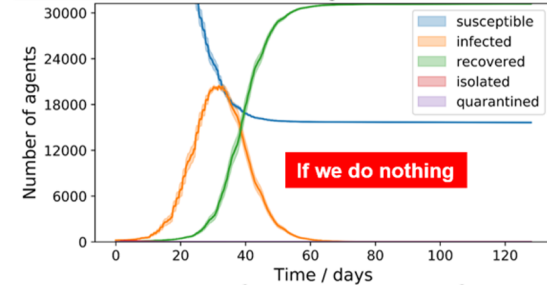
- We developed methodology to calculate if hospital and ICU bed capacity will be exceeded. Currently, we do **not** see a risk of exceeding capacity in next 4 weeks in any region
- Only region 9 shows a risk of exceeding threshold in November, probably too far out to be a significant concern

State now achieving 17,000 extra tests a day due to UIUC SHIELD project

- We predict that a combination of multiple mitigation strategies (2 tests a week, masks, online classes, contact tracing and digital exposure notification) can contain the epidemics on campus

Aug 29, 2020

SHIELD Reopening Team



Estimate for how many students will be infected over the whole semester (including 200 initial imports)